

Eagle

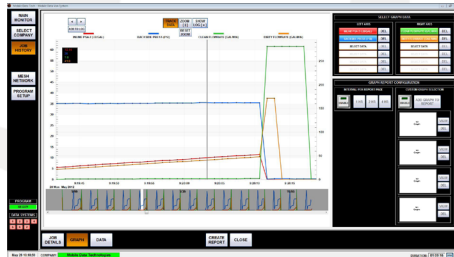
OVERVIEW

EAGLE software was designed to take advantage of full HD 1920x1080 displays. This expanded dashboard provides the operator with an even more versatile view of up to 12 sensors and 3 independent real-time graphs. Each graph and digital display box can be dynamically configured to match the operators preferred dashboard.



KEY FEATURES

- Dynamic digital box channel configuration
- Real-time graph with zoom, strip chart mode and event markers for job log
- Auto-record so data is never lost
- Powerful reporting generated on the spot for quick USB and/or email transfer



MDT
MOBILE DATA
TECHNOLOGIES

SPECIFICATIONS

- Supports single monitor 1920x1080 resolution in Day & Night Modes
- Automatic job report PDF generation w/company embedded logo
- Real-time monitoring with single graph and three digital sensor displays or up to six digital sensor displays without a graph
- On graph event tracking
- Strip charting mode
- Graph zooming function
- Up to 4 additional custom graphs per job
- Integrated company database
- Integrated job history database
- CSV file output
- Configurable record intervals & test duration
- Built in email for job reports
- Built in remote support utility
- Built in visual alarms (low, low-low, high & high-high)
- Built in test/fail lines
- Relay safety shutdown capable (additional hardware required)

#101, 14535 118 Ave
Edmonton, Alberta, Canada
T5L 2M7

Toll Free: +1 (855) 638-6384
Local: +1 (780) 452-4855

mobiledatatech.com
salesteam@mobiledatatech.com
support@mobiledatatech.com